

8.00	Registration	l'Academia Foyer
8.30	Opening plenary session Chairperson: Laurence Bomsell Welcome to HLDA9 Pablo Engel David Mason Memorial Lecture Leukocyte surface molecules: history and the future Heddy Zola	Main Auditorium
9.30	Plenary session: Structure and function of cell-surface molecules Chairperson: Vaclav Horejsi CD300 – Ancient molecules regulating immune responses Georgina Clark	Main Auditorium
10:30	Coffee break	l'Academia Foyer
11:00	Plenary session: Structure and function of cell-surface molecules SLAM family cell surface receptors as microbial sensors Cox Terhorst TIM genes: A family of phosphatidylserine receptors Gordon Freeman CD94/NKG2 C-type lectin-like receptors Miguel Lopez-Botet	Main Auditorium





13.30	Lunch	l'Academia Grounds
15.00	<p>Special sessions SLAM and SAP adaptor families in immune responses – I</p> <p>Antibody therapy</p> <p>Production, characterization, and validation of mAbs (EuroMAbNet) – I</p> <p>Ectoenzymes and disease – I</p>	<p>Main Auditorium</p> <p>Room 8</p> <p>Room 9</p> <p>Room 10</p>
16.45	Coffee break	l'Academia Foyer
17.15	<p>Special sessions SLAM and SAP adaptor families in immune responses – II</p> <p>Phenotyping of immunodeficiencies</p> <p>Production, characterization, and validation of mAbs (EuroMAbNet) – II</p> <p>Ectoenzymes and disease – II</p>	<p>Main Auditorium</p> <p>Room 8</p> <p>Room 9</p> <p>Room 10</p>
21.00	GALA DINNER	Restaurant



<p>8.00</p>	<p>Plenary session: B cell differentiation and B cell subsets Chairperson: Pablo Engel</p> <p>Dissection of human B cell differentiation: how to build up an immunocompetent repertoire? Menno van Zelm</p> <p>New insights in mucosal immunoglobulin class switching Andrea Cerutti</p> <p>A role of protein kinase N1 in quality control of germinal center B cells Hitoshi Kikutani</p>	<p>Main Auditorium</p>
<p>10:30</p>	<p>Coffee break</p>	<p>l'Academia Foyer</p>
<p>11:00</p>	<p>Plenary session: Targeting B cells Chairperson: Andrea Cerutti</p> <p>Targeting pathogenic and regulatory B cells in autoimmune disease Thomas F. Tedder</p> <p>Microenvironmental interactions and clinical features in CLL: the lesson of CD49d Valter Gattei</p> <p>Ectoenzymes at the junction between innate and adaptive immunity Fabio Malavasi</p>	<p>Main Auditorium</p>
<p>13.30</p>	<p>Lunch</p>	<p>l'Academia Grounds</p>





15.00	Special sessions B cell malignancies – I Proteomics and genomics B cell subsets and plasma cells	Main Auditorium Room 9 Room 10
16.45	Coffee break	l'Academia Foyer
17.15	Special sessions B cell malignancies – II Dendritic cells / Receptors of the innate immune system New cell surface molecules	Main Auditorium Room 8 Room 9



8.00	<p>Plenary Session: Leukocyte Signaling Chairperson: Hannes Stockinger</p> <p>Genetic and functional interactions between polymorphic receptors and counter-receptors in the MHC and NK receptor families John Trowsdale</p> <p>The roles of membrane rafts in leukocyte biology Vaclav Horejsi</p> <p>Tetraspan-enriched microdomains: a functional unit in cell plasma membranes Francisco Sanchez-Madrid</p>	Main Auditorium
10:30	Coffee Break	l'Academia Foyer
11:00	<p>Plenary Session: Immunome Chairperson: Heddy Zola</p> <p>The human surface proteome using antibody-based proteomics Mathias Uhlén</p> <p>Ultra-sensitive single molecule fluorescence imaging for detection of CD-antigen function in live immune cells Hannes Stockinger</p> <p>The New CD Molecules Pablo Engel</p> <p>HCDM: Perspective on future developments Laurence Bousnell</p>	Main Auditorium

SLAM and SAP adaptor families in immune responses

Chairpersons: Marion Brown, Arpád Lányi

Regulation of natural killer cells and T cells by SLAM-related receptors

Claus M, Meinke S, Wingert S, Watzl C

Specific requirement for SAP in immunity to Epstein Barr Virus infection

Palendira M, Hislop AD, Low C, Ho E, Phan T, Cook M, Riminton DS, Wall R, Alvaro F, Rickinson A, Tangye SG

Slamf6 (Ly108) controls T cell-mediated humoral autoimmunity

Keszei M, Detre C, Wang N, Calpe S, Vanguri V, Castro W, Sharpe A, Terhorst C

CD2 and CD244: Relatives and Rivals

Clarkson NG, Brown, MH

Regulation of signal transduction pathways in B lymphocytes via CD150 receptor

Yurchenko MY, Vitak NY, Shlapatska LM, Mikhalap SV, Berdova GG, Clark EA, Sidorenko SP

SLAMF8 modulate innate immune functions of macrophages

Rojas D, Calvache L, Abadia-Molina F, Berger S, Terhorst C, Abadia-Molina A

The role of SLAMF1 in the pathogenesis of inflammatory bowel disease

Romero X, Faubion W, Manocha M, Berger SB, Wang G, Holmes K, Terhorst C

The SLAM family and SAP: Diversified players of T-dependent B cell responses

Detre C, Keszei M, Terhorst C

CD150 expression in tumors of the central nervous system (P)

Romanets O, Yurchenko M, Malysheva T, Horvat B, Sidorenko S

Expression of SLAM family cell-surface receptors on human B cell subsets: from pro-B to plasma cells (P)

de Salort J, Sintes J, Llinas L, Matesanz-Isabel J, Diaz-Ramos MC, Lazaro A, Bastos R, Engel P

Phenotyping of Immunodeficiencies

Chairperson: Klaus Warnatz, Eduardo Lopez-Granados

B-cell defects in patients with primary antibody deficiency

van Zelm M

ABCD - Analyzing B cell deficiency

Warnatz K

Immunodeficiencies with deregulated T-cell mediated cytotoxicity

Lopez-Granados E



Molecular analysis of the mutant CD8 molecule responsible for familial CD8 deficiency
Martínez-Martínez L, González-Santesteban C, Poppi C, Pradas M, Hernández M, de la Calle-Martin O

Tissue-specific B-cell dysfunction and generalized memory b-cell loss during acute SIV infection
Peruchon S, Chaoul N, Burelout C, Cognasse F, Prévot S, Garraud O, Le Grand R, Richard Y

Altered TCR expression and function in heterozygous carriers of CD3 or mutations
Ruiz MM, Pérez-Flores V, Guardo AC, Ssachkova G, Allende LM, Takada H, Schamel WW, Kiliç SS, Sanal O, Roifman CM, Martín-Fernández JM, Fernández-Malavé E, Regueiro JR

Antibody therapy

Chairpersons: Boquan Jin, Heddy Zola

Anti-Lymphoma activity of saporin-based immunotoxins constructed with anti-CD22 antibodies recognising different epitopes on the CD22 molecule
Holmes S, Gibbs E, Flavell SU, Flavell DJ

Characterization of new anti-CD38 monoclonals for the treatment of Chronic Lymphocytic Leukemia (CLL)
Castagna M, Della Cristina P, Pasetto M, Barison E, Ceriotti A, Fabbrini MS, Lombardi A, Flavell DJ, Flavell SU, Ippoliti R, Colombatti M

B-Cell lymphomas and leukemias have variable levels of expression of target antigens (CD20 and CD52)
for therapy with monoclonal antibodies measured by quantitative fluorescence cytometry
Pevná M, oupek P, Stehliková O, Doubek M, Klabusay M

Anti-DR5 monoclonal antibody, AD5-10, with tumoricidal activity induces apoptosis and autophagy
Zheng D, Liu Y

Establishment of a double transgenic HLA-A2Kb/HER-2 mouse model for evaluating the potential efficacy of HER-2-based DCHER-2 vaccine
Xiang J

Production, characterization, and validation of mAbs (EuroMAbNet)

Chairpersons: Giovanna Roncador, Alison Banham

Different strategies for antibody validation
Maestre L, Ramos-Medina R, Prieto E, Roncador G

Intelligent antigen design - the key to making specific antibodies and a useful tool for selecting the best commercially available reagents
Brown PJ, Linden L, Bignone P, Banham AH

Specific antibodies – maybe!

Liggins A, Dopierala J, Baranowski B, Pulford K

Specific strategies for production of monoclonal antibodies to chemokine receptors

Llorente M, Lozano M, Garcia-Gallo M, Kremer L

Production of simian monoclonal antibodies

Jaffrelo L, Reveil B, Lamourette P, Roques P, Cohen J, Volland H

Preparation, characterization, and application of monoclonal antibodies against (P) interleukin-13 receptor 2 chain

Xu Z, Li Q, Zhang T, Song C, Dong Y, Jin B

Preparation and characterization of monoclonal antibodies against Calreticulin (P)

Chen L, Song C, Liu R, Zhuang R, Xiao L, Gong J, Dong Y, Tian Y, Zhang C, Li Q, Jin B

Ectoenzymes and disease

Chairpersons: Fabio Malavasi, Silvia Deaglio

Protein mono-ADP-ribosylation: a potent mechanism for the regulation of cell functions

Haag F

The significance of CD38 polymorphisms in B-cell lymphoproliferative disorders

Jamrozia K

Role of CD38 in the maintenance and progression of chronic lymphocytic leukemia

Deaglio S

Low CD38 expression in lymphoblastoid cells and haplotypes are both associated with autism in a family-based study

Ebstein R

CD38 is secreted in exosomes associated with CD81 and HSC-70 from human lymphoblastoid B cells

Zumaquero E, Malavasi F, Sancho J, Zubiaur M

Possible ligand(s) for CD38 on dendritic cells

Vences-Catalán F, Cedillo-Barrón L, Santos-Argumedo L

An adenosinergic loop contributes to the creation of microenvironmental conditions favoring CLL growth and expansion

Serra S, Tripodo C, Horenstein AL, Vaisitti T, Audrito V, Cottino F, Rossi D, Gottardi D, Gaidano G, Robson S, Malavasi F, Deaglio S

Nicotinamide promotes apoptosis in chronic lymphocytic leukemia cells through the activation of the p53/SIRT1 network

Audrito V, Vaisitti T, Serra S, Cottino F, Gottardi D, Rossi D, Gaidano G, Malavasi F, Deaglio S

Expression of NAD⁺-consuming ectoenzymes in corneal limbal cells: potential functional and clinical significance

Horenstein AL, Sizzano F, Ferrero E, Deaglio S, Malavasi F

B cell malignancies

Chairpersons: Valter Gattei, Luigi Del Vecchio

IF clustering & correlation with risk categories: the example of CLL

Zucchetto A

IF of high grade lymphomas: clinical implications

Del Vecchio L

IF of low grade lymphomas: old and novel markers

Geuna M

Mutual benefits of B-ALL and HLDA/HCDM (P – O)

Faure GC, Bene MC on behalf of the GEIL (Groupe d'Etudes Immunologiques des Leucémies)

New functions for matrix metalloproteinase-9 in B-cell chronic lymphocytic leukemia

Redondo-Muñoz J, Ugarte-Berzal E, Terol MJ, Van den Steen PE, Hernández del Cerro M, Roderfeld M, Roeb E, Opdenakker G, García-Marco JA, and García-Pardo A

CD38 CD49d are physically associated in B-cell Chronic Lymphocytic Leukemia (CLL) cells and cooperate in sustaining CLL cell survival

Zucchetto A, Vaisitti T, Benedetti D, Bomben R, Dal Bo M, Degan M, Del Poeta G, Gattei V, Malavasi F, Deaglio S

CD49d expression identifies a Chronic Lymphocytic Leukemia (CLL) subset with high levels of circulating CD34⁺cCells co-expressing endothelial cell markers

Rossi FM, Rossi D, Zucchetto A, Bomben R, Dal Bo M, Benedetti D, Tripodo C, Pozzato G, Gaidano G, Del Poeta G, Gattei V

New monoclonal antibodies (mAbs) against B-cell antigens: immunohistochemical analysis of cryostat sections of primary cutaneous B lymphomas (PC-BL) (P – O)

Fanoni D, Fiorani R, Tavecchio S, Venegoni L, Crosti C, Berti E

ZAP-70 expression evaluated by mean fluorescence intensity T/B ratio is a more useful prognosticator than percentage of positive cells in Chronic Lymphocytic Leukemia (CLL)

Rossi FM, Del Principe MI, Rossi D, Consalvo MI, Luciano F, Zucchetto A, Bulian P, Bomben R, Benedetti D, dal Bo M, Degan M, Gaidano G, Del Poeta G, Gattei V

Quantitative detection of chemokine receptors on the cells from patients with chronic lymphocytic leukaemia (P)

Koubek K, Niederlová J

Regulation of matrix metalloproteinase-9 and cell migration by VEGF/VEGFR2 interaction in B-CLL cells (P)

Ugarte-Berzal E, Redondo-Muñoz J, Eroles P, Hernández del Cerro M, García-Marco JA, Terol MJ, García-Pardo A

Reactivity of HLDA9 monoclonal antibodies in normal and tumoral lymphoid tissues using tissue arrays (P)

Ramos-Medina R, Montes S, Maestre L, Lazaro A, Engel P, Roncador G

Acute lymphoblastic leukemia (ALL): The most common type of childhood cancer (P)

Shahzad A, Köhler G

Proteomics and genomics

Chairpersons: Mathias Uhlén, John Trowsdale

Multi-dimensional antibody array analysis of leukocytes using the HLDA panel in combination with 1500 commercially available antibodies to cellular proteins

Holm A, Wu W, Goullart L, Slaastad H, Kanderova V, Kalina T, Lund-Johansen F

Surface profiles of inflammatory leukocytes in colorectal cancers

Zhou J, Belov L, Christopherson RI

Proteomic cell-surface phenotyping of differentiating stem cells

Bausch-Fluck D, Hofmann A, Bock T, Frei A, Jacobs A, Wollscheid B

Using antibody panels to give a snapshot of multiple leucocyte subsets in the human immune system

Nicholson I, Millard D, Krumbiegel D, Grose R, Dunne J, Zola H

Towards a comprehensive human cell-surface immunome database (P)

Diaz-Ramos MC, Matesanz-Isabel J, Liinas L, Sintes J, de Salort J, Lazaro A, Engel P, Bastos R

B cell subsets and plasma cells

Chairperson: Pablo Engel

New monoclonal antibodies (mAbs) of the 9th HLDA Workshop: an immunohistochemical analysis of the FACS and IHC panel mAbs on normal and activated skin and tonsil (P – O)

Venegoni L, Tavecchio S, Fiorani R, Fanoni D, Crosti C, Berti E

Characterization of human peripheral blood B-cells: from immature B-cells to early plasma cells (P – O)

Perez-Andres M, Caraux A, Paiva B, Schmitz A, Bret C, Fuhler G, Fiol G, Almeida J, Duperray C, Grey W, Bos NA, San Miguel JF, Johnsen HE, Klein B, Orfao A on behalf of MSCNET (Myeloma Stem Cell Network) European strep (Contract n° 037602)

Immunohistochemical evaluation of germinal centre cell-related molecules in Marginal Zone B-cell Lymphomas (MZL) (P – O)

Ponzoni M, Spagnuolo L, Papa I, Vino A, Guerini Rocco E, Famoso G, Ferreri AJM, Dogliani C

Structural and functional interactions by CD38-mediated signals on human plasma cells

Zaccarello G, Grande V, Urbonas M, Omedè P, Horenstein A, Massaia M, Deaglio S, Malavasi F

Differential expression of SLAMs and other regulatory molecules on human plasma cells during normal maturation (P)

Ramos-Amaya A, Rodríguez-Bayona B, Brieva JA

Germinal center recruitment of B lymphocytes is associated with the loss of HVEM, BTLA AND FCRL1 (P)

Rodríguez-Bayona B, Ramos-Amaya A, Brieva JA

Expression profile of novel cell-surface molecules on B-cell subsets and plasma cells analysed by flow cytometry (P)

Llinas L, Matesanz-Isabel J, de Salort J, Sintés J, Lazaro A, Diaz-Ramos C, Bastos R, Engel P

Characterization of new cell-surface molecules by enzymatic indirect immunohistochemistry in paraffin-embedded human tonsil (P)

Lazaro A, Llinas L, Matesanz-Isabel J, Sintés J, de Salort J, Diaz-Ramos MC, Bastos R, Engel P

Validation of HLDA9 monoclonal antibodies (P)

Matesanz-Isabel J, Llinas L, Lazaro A, Diaz-Ramos MC, Sintés J, de Salort J, Bastos R, Engel P

B-cell immune response to glycoconjugate vaccination (P)

Nescáková Z, Bystrický S, Paulovicová E, Paulovicová L, Korcová J, Machová E, Farkas P

Dendritic cells / Receptors of the innate immune system

Chairpersons: Georgina Clark, Francisco Lozano

The Scavenger Receptor Cysteine-Rich (SRCR) domain: a highly conserved protein module in immunoreceptors the innate immune system.

Francisco Lozano

Analysis of HLDA9 mAb on plasmacytoid dendritic cells

Benitez D, Sintés J, Llinas L, Engel P

Screening of the HLDA9 Panel on Peripheral Blood Dendritic Cell Populations (P – O)

Ding Y, Ju X, Hart D, Clark G

A new transmembrane adaptor of B cells and myeloid cells protein involved in MHCII signalling

Draber P, Vonkova I, Kacerova T, Otahal P, Angelisova P, Horejsi V, Weiss A, Brdicka T

Type I interferon regulation by RIG-I and MDA5 in human monocyte-derived CD1a+ and CD1a- dendritic cell subsets

Szabo A, Bene K, Gogolak P, Varga RE, Rajnavolgyi E

NKp46 and DNAM-1 NK cell receptors drive the response to human cytomegalovirus infected myeloid dendritic cells overcoming viral immune evasion strategies

Magri G, Muntasell A, Romo N, Sáez-Borderías A, Pende D, Angulo A, Moretta A, López-Botet M

Inhibition of NKG2D expression in NK cells by cytokines secreted in response to human cytomegalovirus infection

Muntasell A, Magri G, Pende D, Angulo A, López-Botet M

Comperative analysis of bone marrow and saphenous vein derived mesenchymal stem cells (P)

Veréb Z, Boda Z, Olvasztó S, Rajnavölgyi É

New cell surface molecules

Chairperson: Ian Nicholson

Enhanced humoral immune responses against T-independent antigens in Fca mR-deficient mice

Honda S, Yoshizawa Y, Usui K, Tahara-Hanaoka S, Shibuya K, Shibuya A

FCRL6 receptor: expression and associated proteins

Mechetina L, Zamoshnikova A, Kulemzin S, Yurchenko M, Vitak N, Najakshin A, Fayngerts S, Kashirina N, Peklo M, Rutkevich P, Rybalkin I, Shevelev A, Yanushevskaya E, Vlasik T, Sidorenko S, Taranin A

Searching for ligands of the FcR-like B cell-specific receptors

Baranov KO, Mechetina LV, Volkova OY, Chikaev NA, Taranin AV, Najakshin AM

Differences and similarities of expression patterns of FCRLA in human and mouse B cells (P)

Volkova OY, Mechetina LV, Reshetnikova ES, Najakshin A, Taranin AV

Identification of oxytocin receptor (OxR) on the surface of human plasma cells

Grande V, Zaccarello G, Urbonas M, Omedè P, Horenstein A, Massaia M, Deaglio S, Malavasi F

New CD molecules (P)

Matesanz-Isabel J, Llinas L, de Salort J, Lazaro A, Sintes J, Diaz-Ramos M, Bastos R, Engel P

New iCD molecules (P)

Roncador G, Banham A, Pulford K, Cordell J, Engel (P)

Those presentation titles listed with a (P) at the end are posters; those marked (P – O) are both poster and oral presentations; all others (i.e., those without any designation at the end) are oral presentations.



Notes

Lined area for taking notes, consisting of a light blue background with horizontal lines.



Welcome to More Choice

200+ colorful new BD fluorochrome-conjugated reagents



Add more power to your panel

It's all part of an unprecedented expansion of our product portfolio and a continuation of our commitment to revolutionize multicolor analysis.

Optimized to deliver exceptional performance on BD instruments, these new products are manufactured under the strictest controls to produce exceptional quality and consistency for obtaining reliable, reproducible results.

Visit bdbiosciences.com/choice for all of the details.

Welcome to a more colorful world.SM



Helping all people
live healthy lives

Meet us at the booth

HLDA, 11-13 March 2010,
Barcelona, Spain

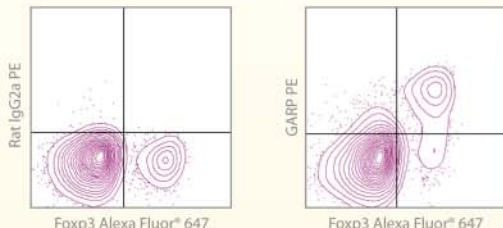
BD Biosciences
Erembodegem-Dorp 86
B-9320 Erembodegem
Belgium
Tel.: (32) 2 400 98 95
Fax: (32) 2 401 70 94
help.biosciences@europe.bd.com
bdbiosciences.com

For Research Use Only. Not for use in diagnostic or therapeutic procedures.
BD, BD Logo and all other Trademarks are property of Becton, Dickinson and Company. © 2009 BD
XEUR1332-00

eBioscience delivers **MORE** choice with a **FULL SPECTRUM** of cell analysis products

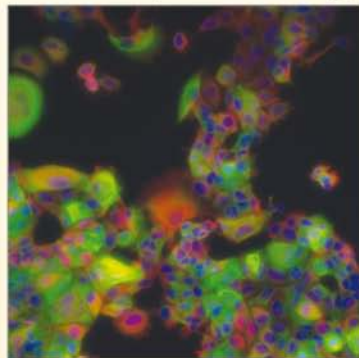
eBioscience advances your research with leading-edge targets and colors for flow cytometry and fluorescence microscopy.

NEW! anti-mouse GARP for Flow Cytometry



Activated CD4+ mouse splenocytes stained with anti-mouse GARP PE and anti-Foxp3, Alexa Fluor® 647.

eFluor® Nanocrystals for Microscopy



Immunofluorescence microscopy of MCF-7 cells stained with anti-pan Cytokeratin Alexa Fluor® 488 (green) and anti- α Tubulin Biotin followed by eFluor® 650NC Streptavidin (red) and Nuclear Red (DRAQ5™) (blue).

FLOW CYTOMETRY

- 1-Step Fix/Lyse Solution
- Fixable Viability Dye eFluor® 450
- Fixable Viability Dye eFluor® 660
- Fixable Viability Dye eFluor® 780
- anti-mouse GARP
- Human & Mouse Th17 Cytokine Flow Phenotyping Panels

IMMUNOASSAY

- Bender MedSystems FlowCytomix™
- Bender MedSystems Instant ELISA®
- Mouse IL-15/IL-15R Ready-SET-Go!® ELISA

BIOASSAY

- Recombinant Mouse IL-15/IL-15R
- Recombinant Mouse LIF

IMMUNOBLOTTING

- TrueBlot® Western Blotting Reagents

MICROSCOPY

- eFluor® Nanocrystals
- anti-human/canine Ki-67
- anti-pan Cytokeratin

full spectrum cell analysis®
eBioscience®

Discover more online
www.eBioscience.com

ORDER 888.999.1371 • TECH 888.810.6168 • INQUIRIES contact@ebioscience.com



PROGRAM

9th International Conference
on Human Leukocyte
Differentiation Antigens



Barcelona, Spain
11-13 March 2010

