

Sessió de NEUROPATHOLOGIA

Acadèmia de Ciències Mèdiques de Catalunya i Balears
19-12-2013

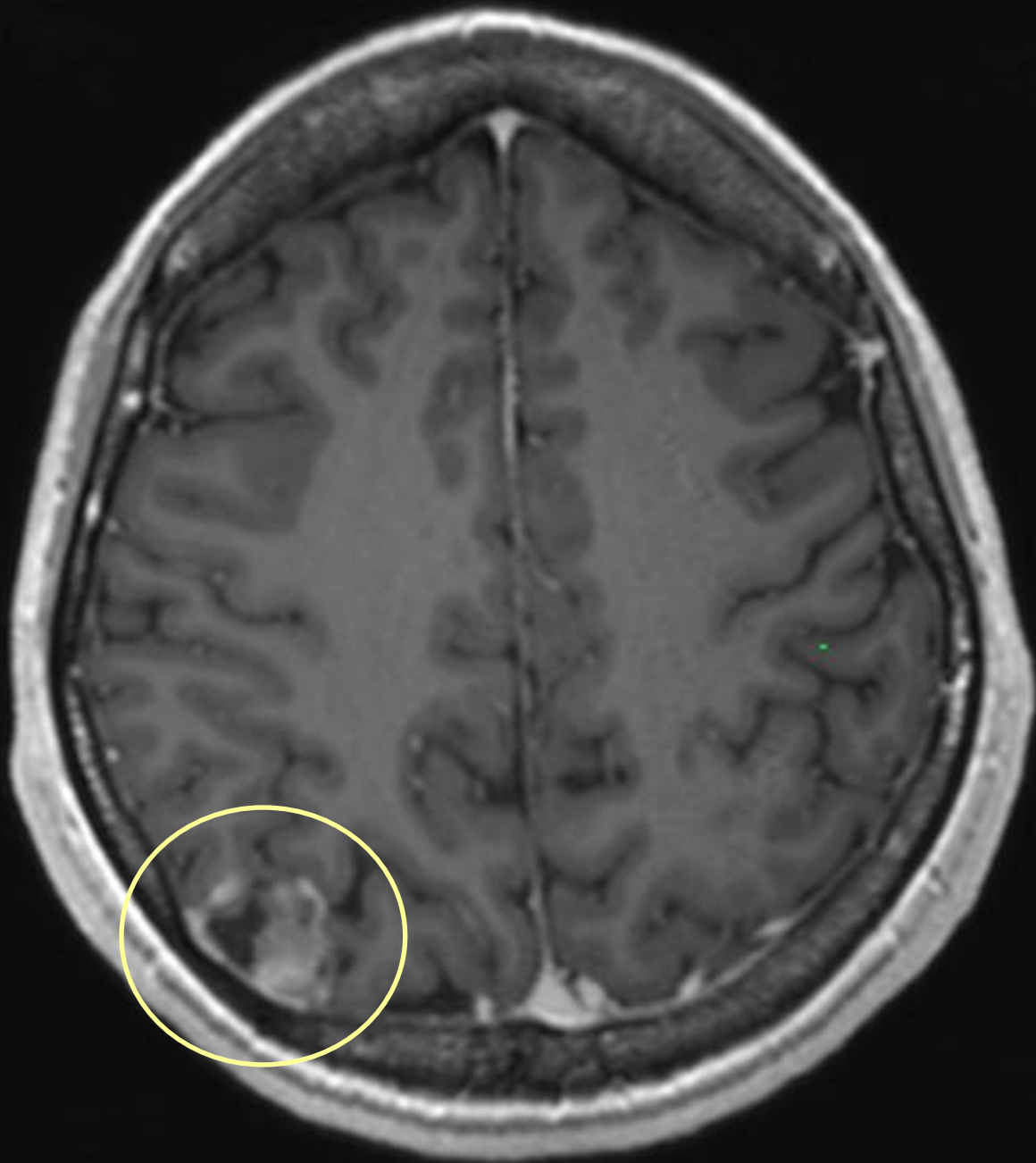
Xavier Sáenz i Sardà
Hospital Universitari Germans Trias i Pujol

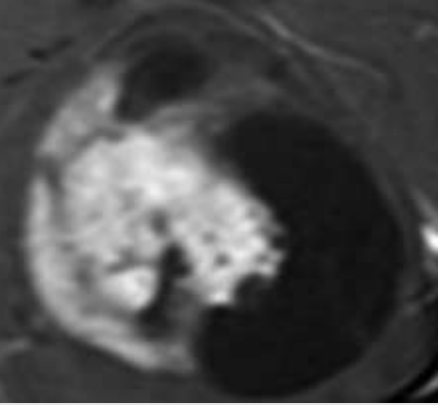
Dona de 28 anys sense antecedents mèdics d'interès

Debut: crisis tònico-clòniques

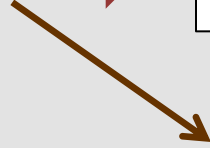
RMN: lesió superficial cortical a lòbul parietal dret (2,3cm)

Craniotomia amb biòpsia intraoperatòria





Lesions quístiques amb nòdul mural a hemisferis cerebrals



Tumors de baix grau (I/II)

DD clínico-radiològic

- Ganglioglioma

- Xantastrocitoma pleomorfe

- Neurocitoma extraventricular

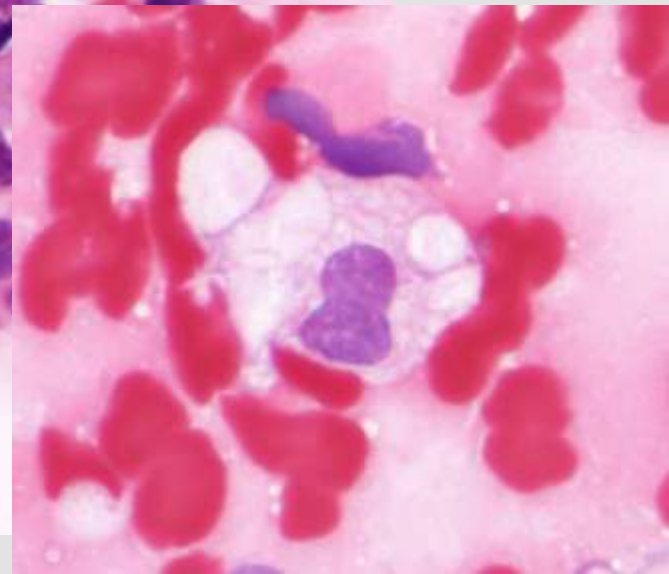
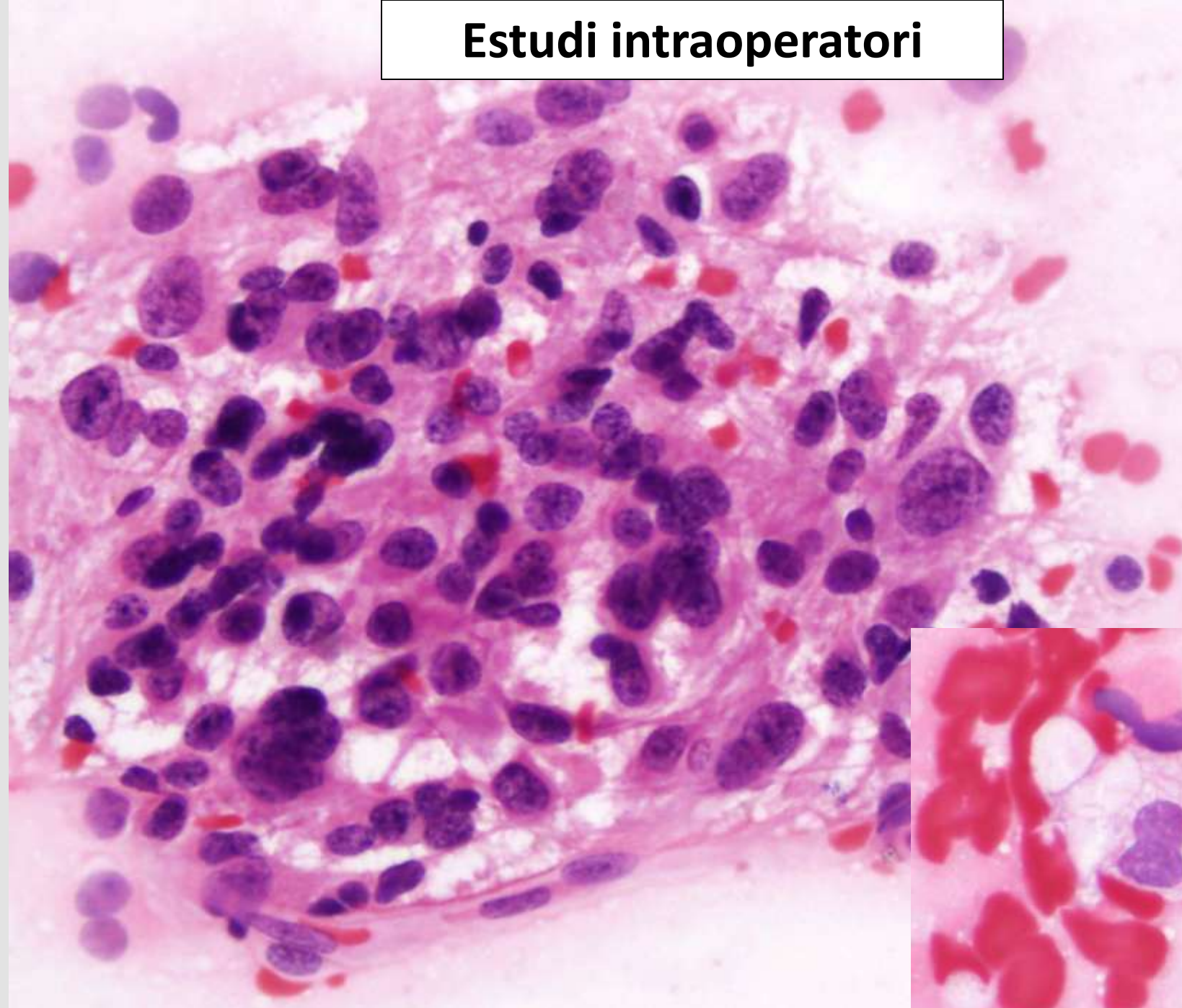
- Astrocitoma pilocític

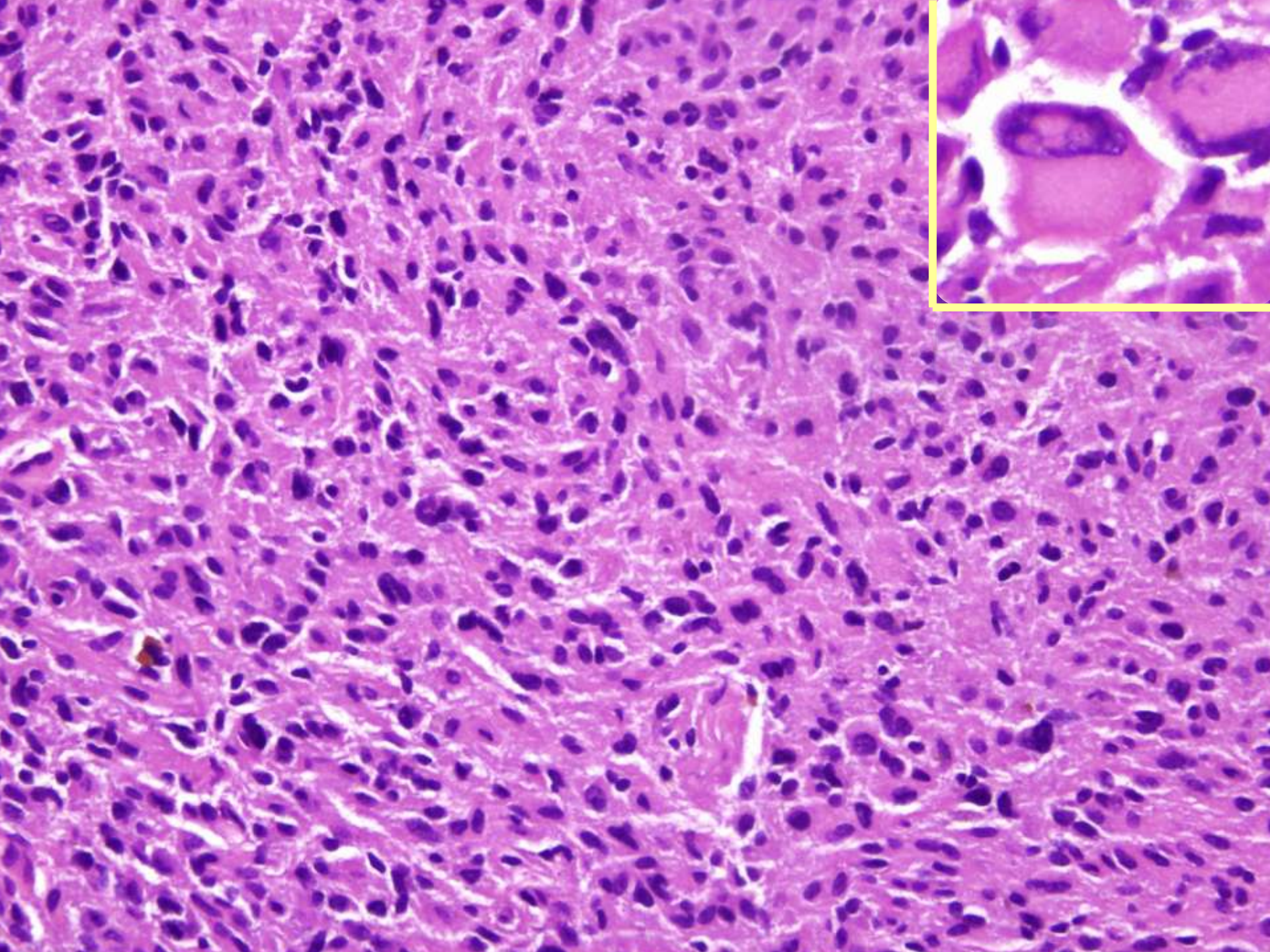
- Ependimoma

- Hemangioblastoma

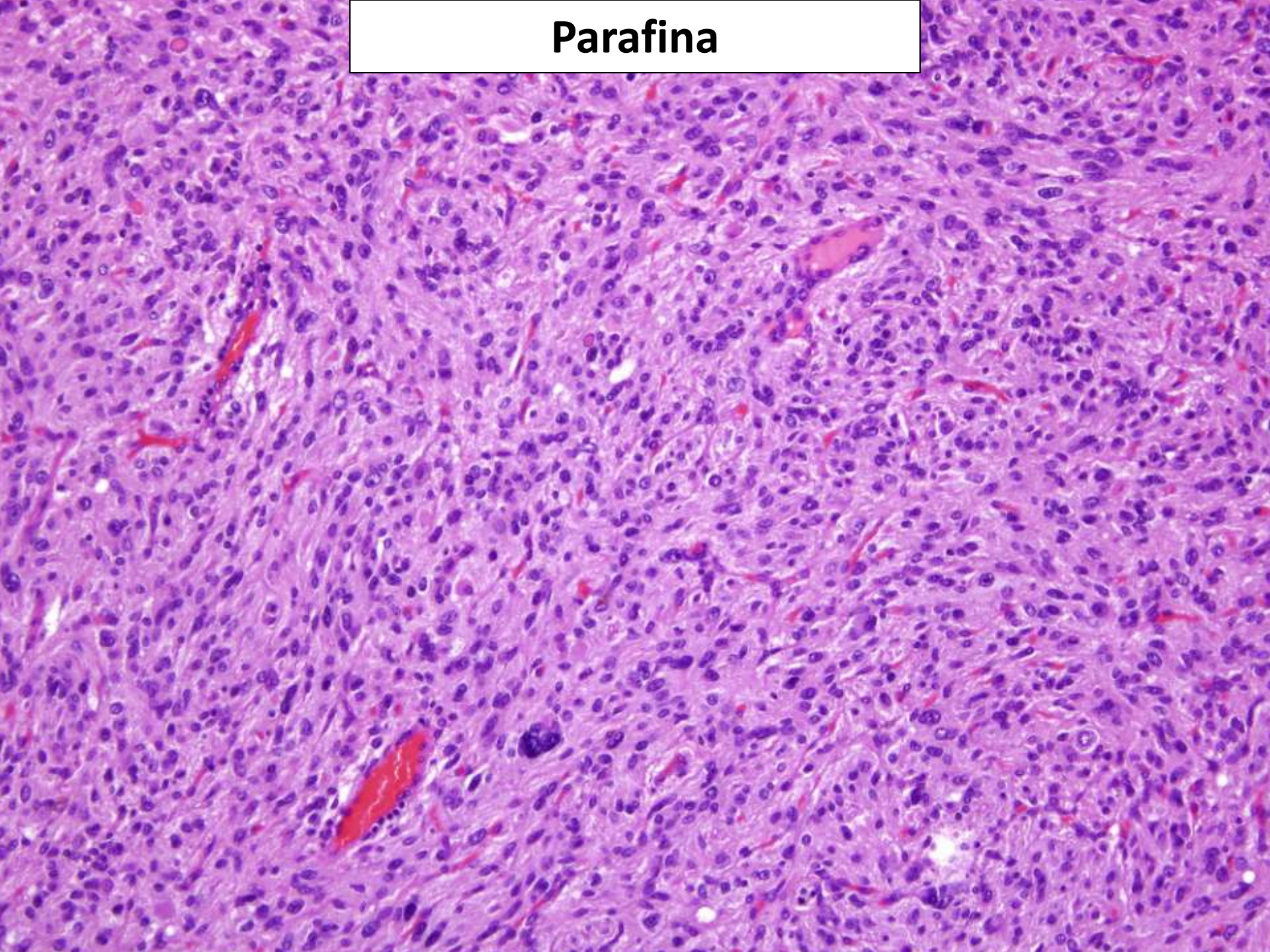
Cerebel /
MEspinal

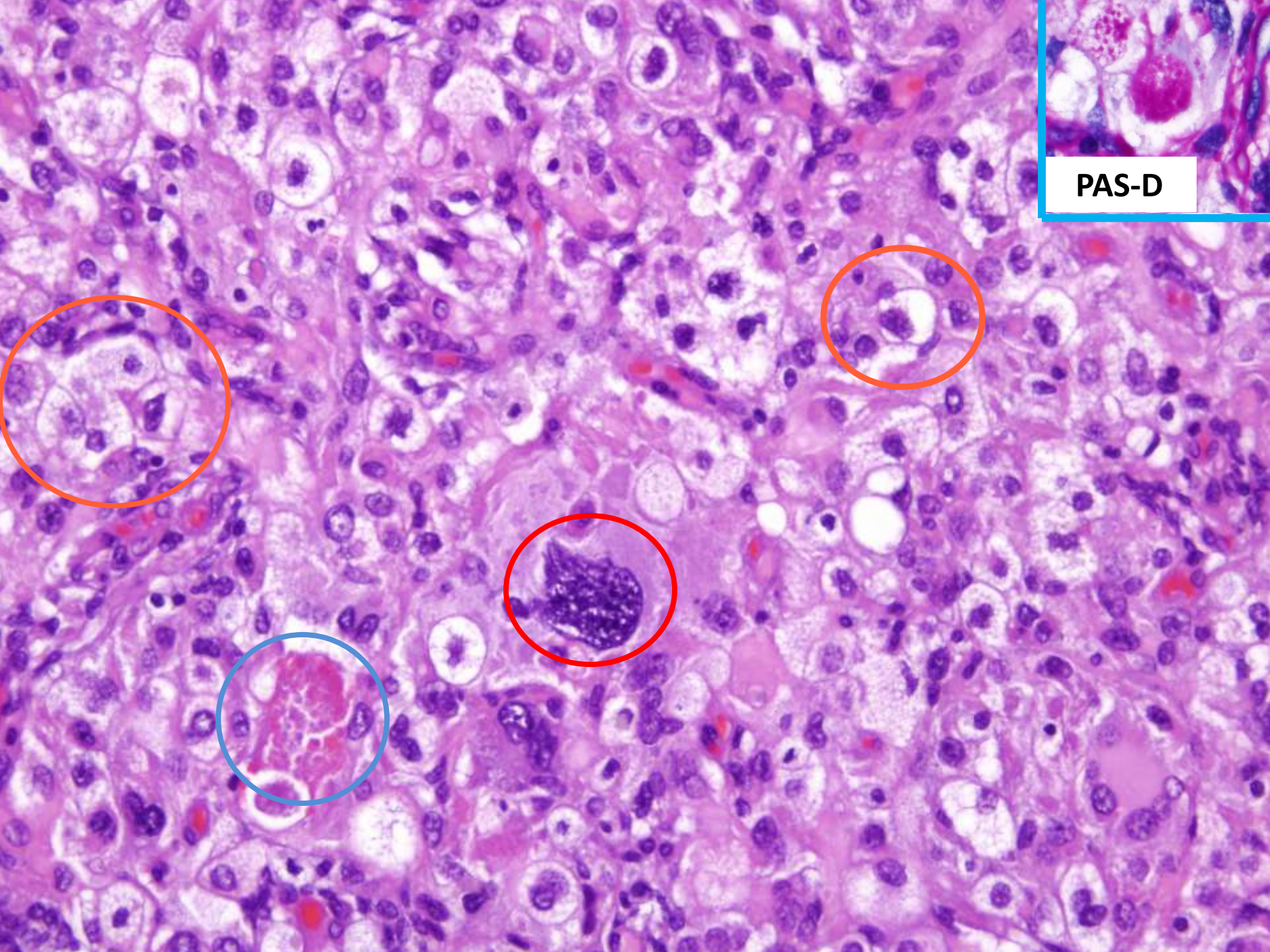
Estudi intraoperatori



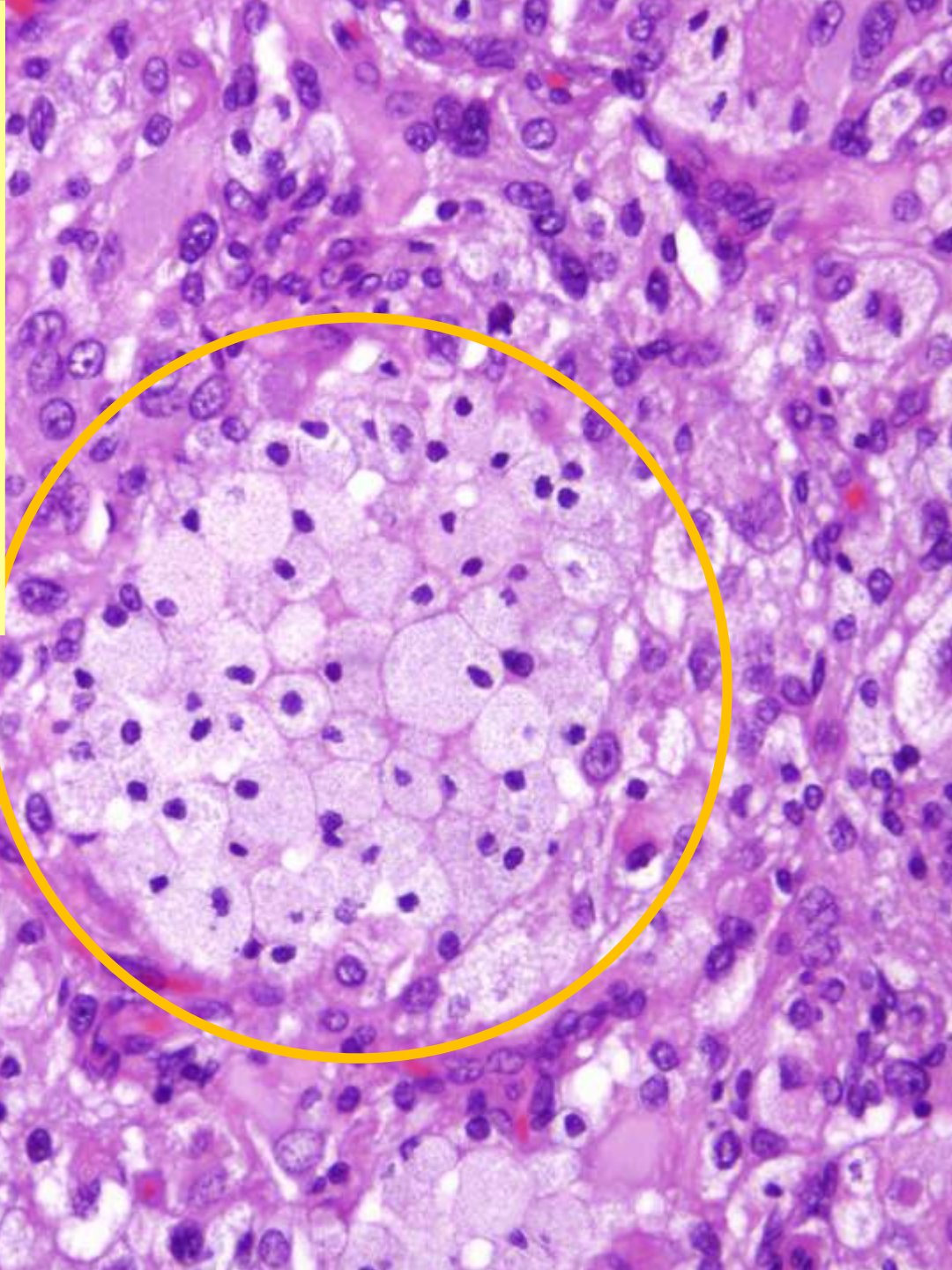
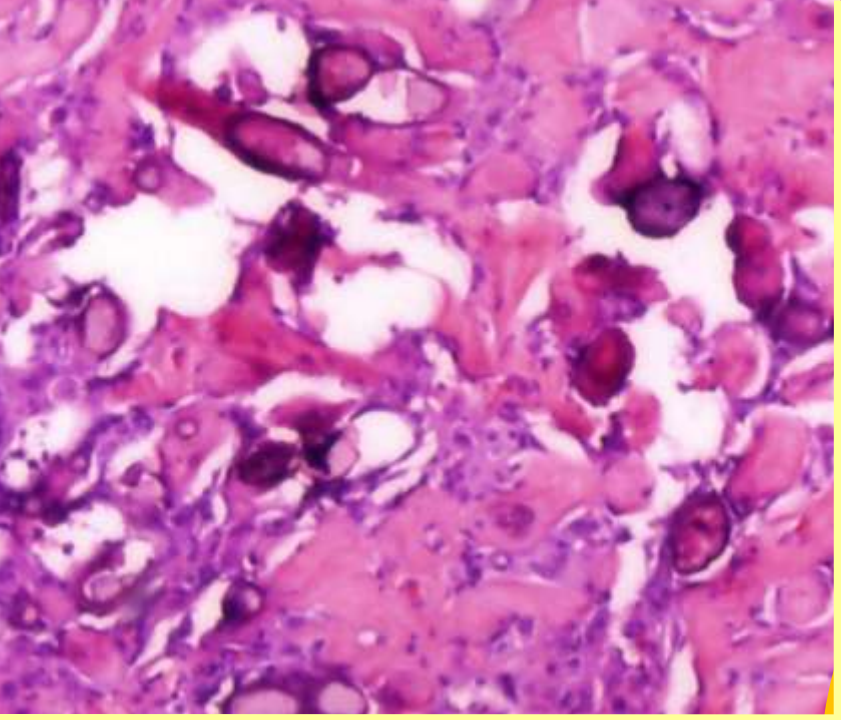


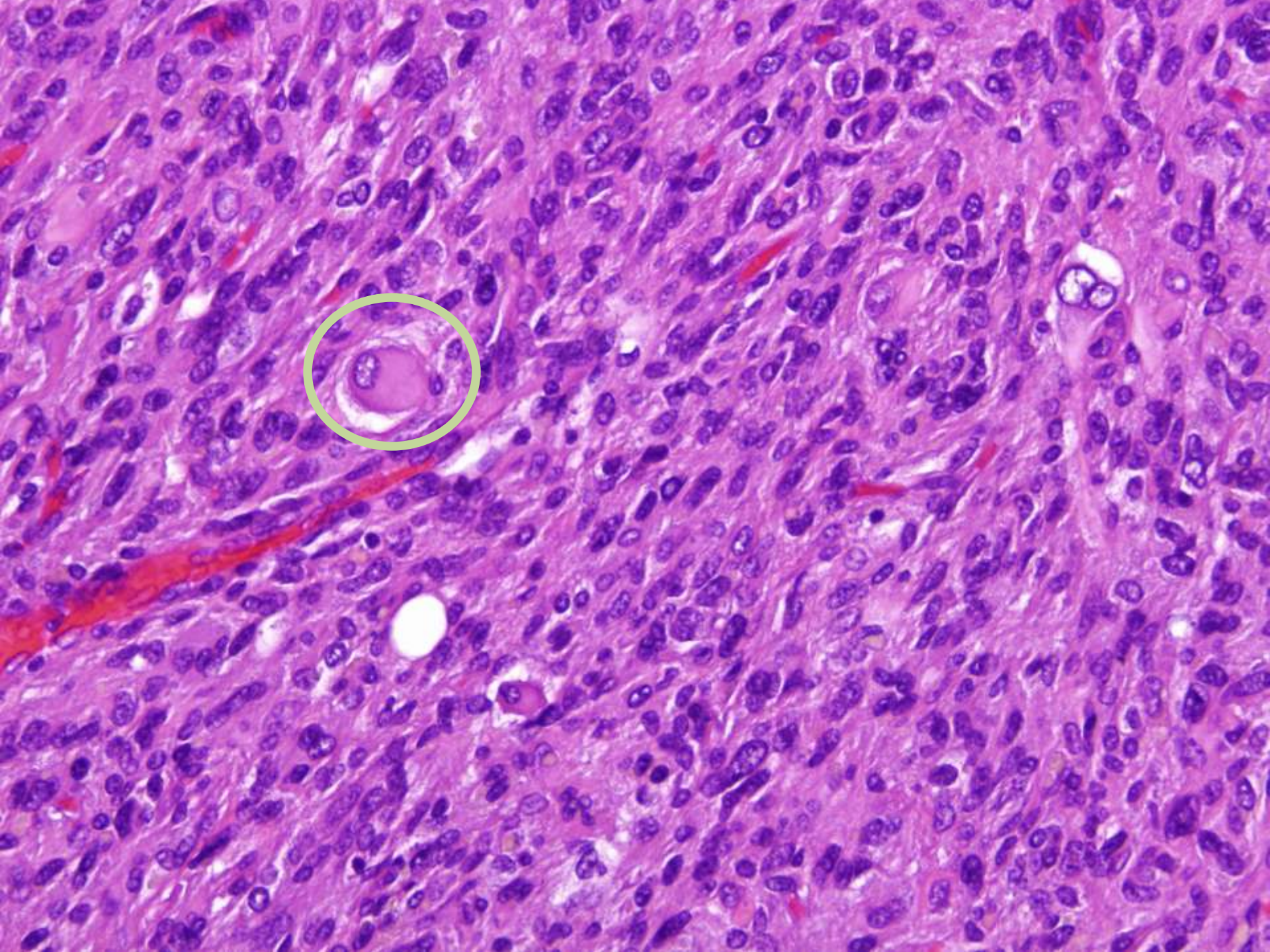
Parafina





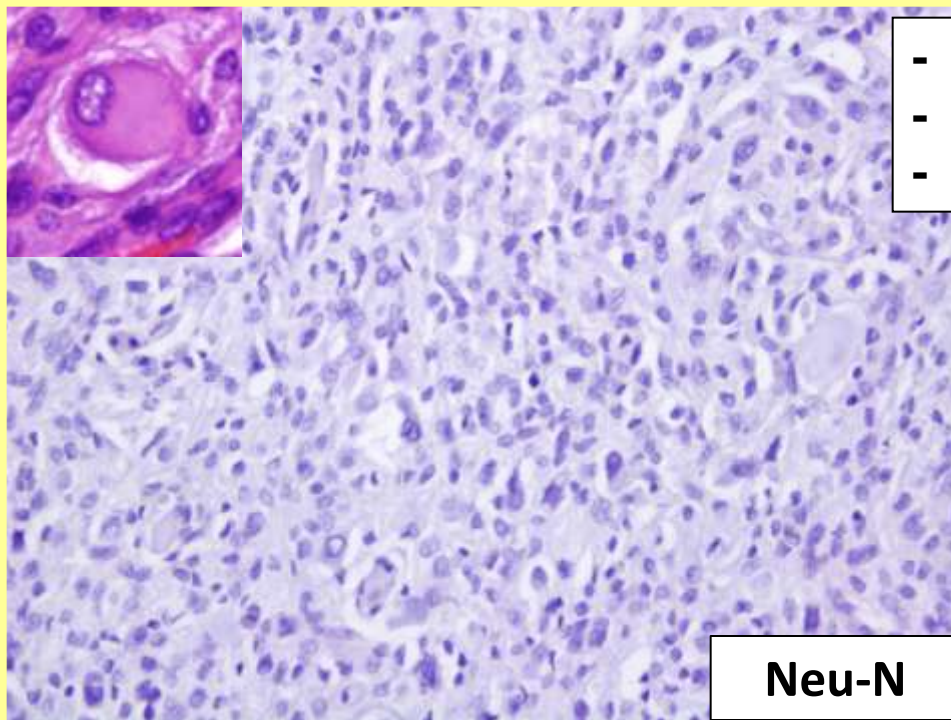
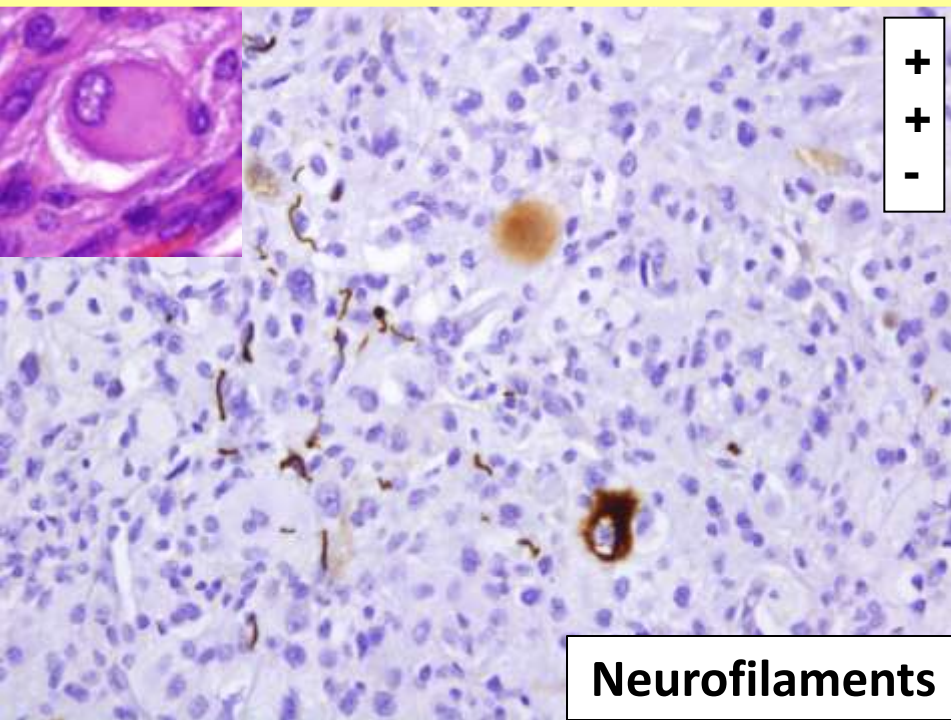
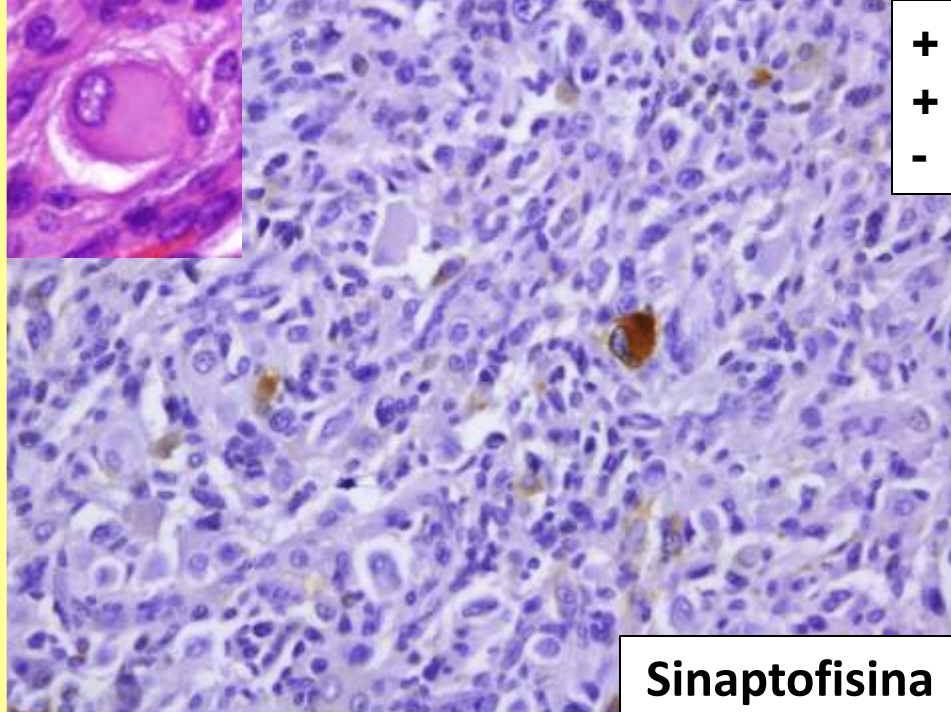
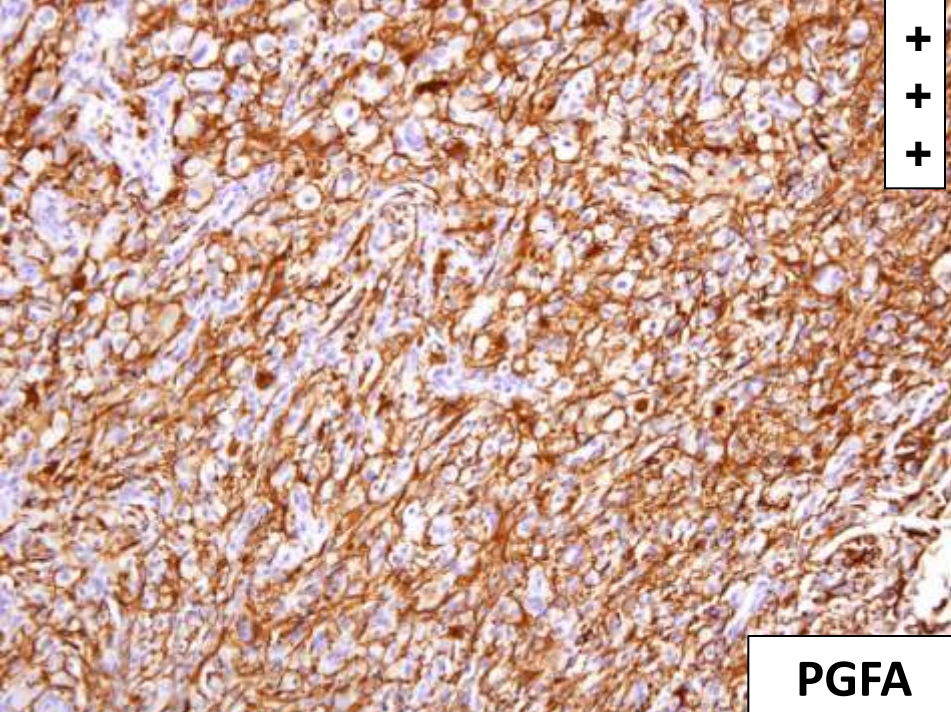
PAS-D

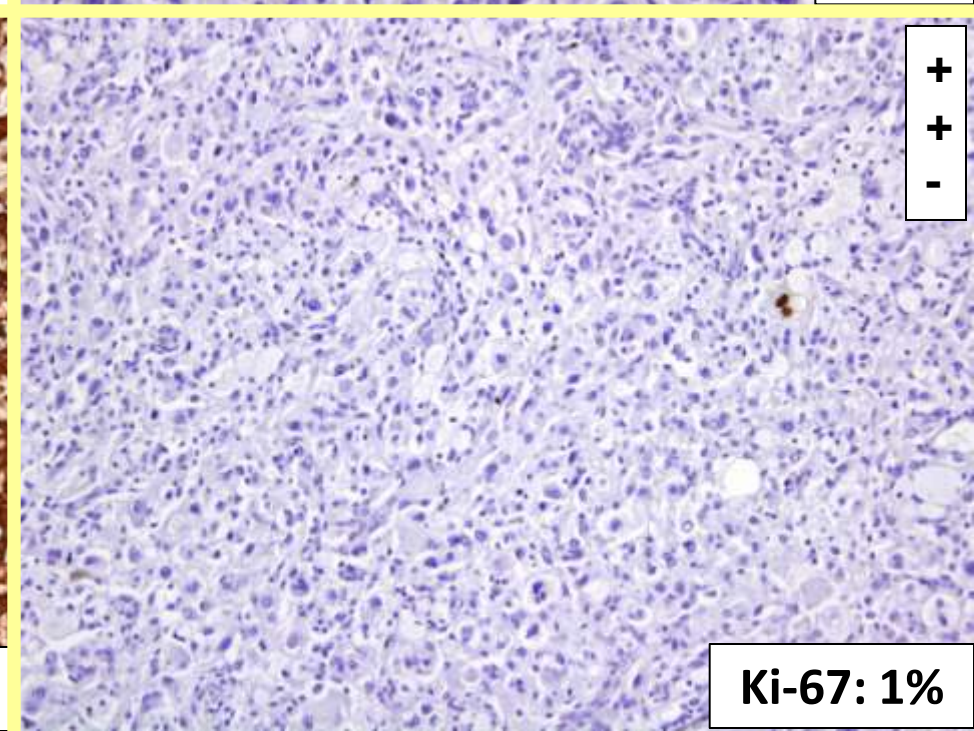
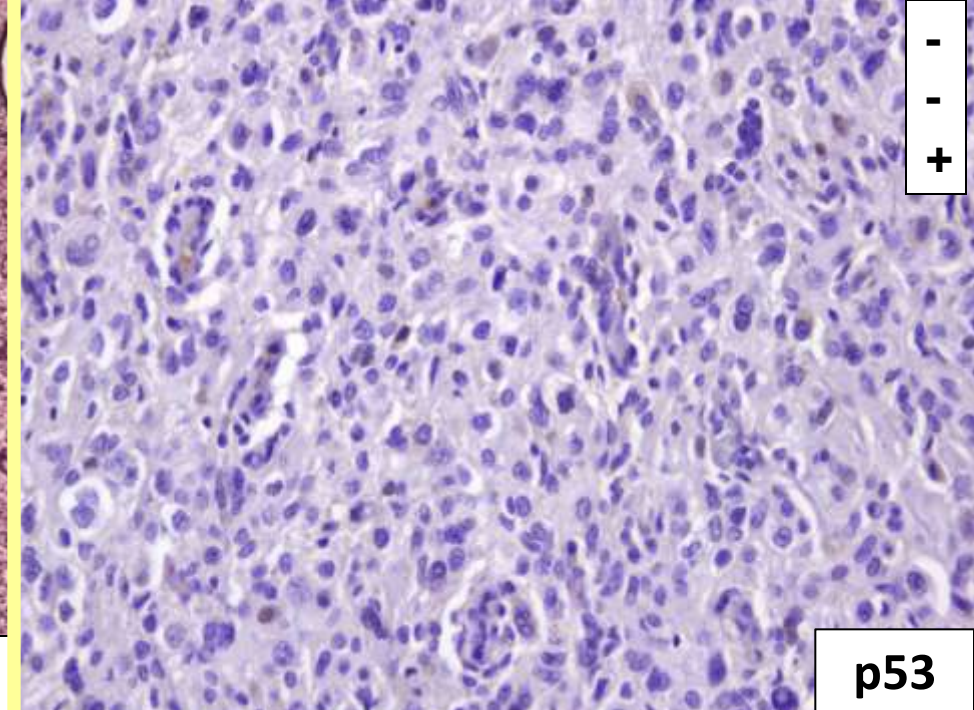
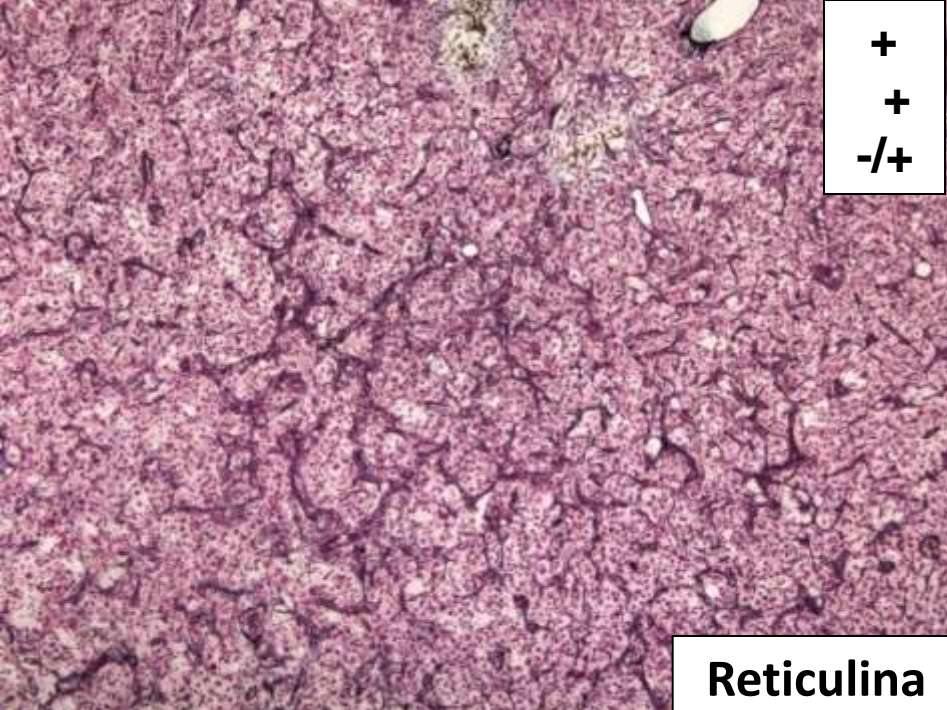




DIAGNÒSTIC DIFERENCIAL:

- Glioblastoma
- Xantoastrocitoma pleomorfo
- Ganglioglioma (amb fons de XAP)



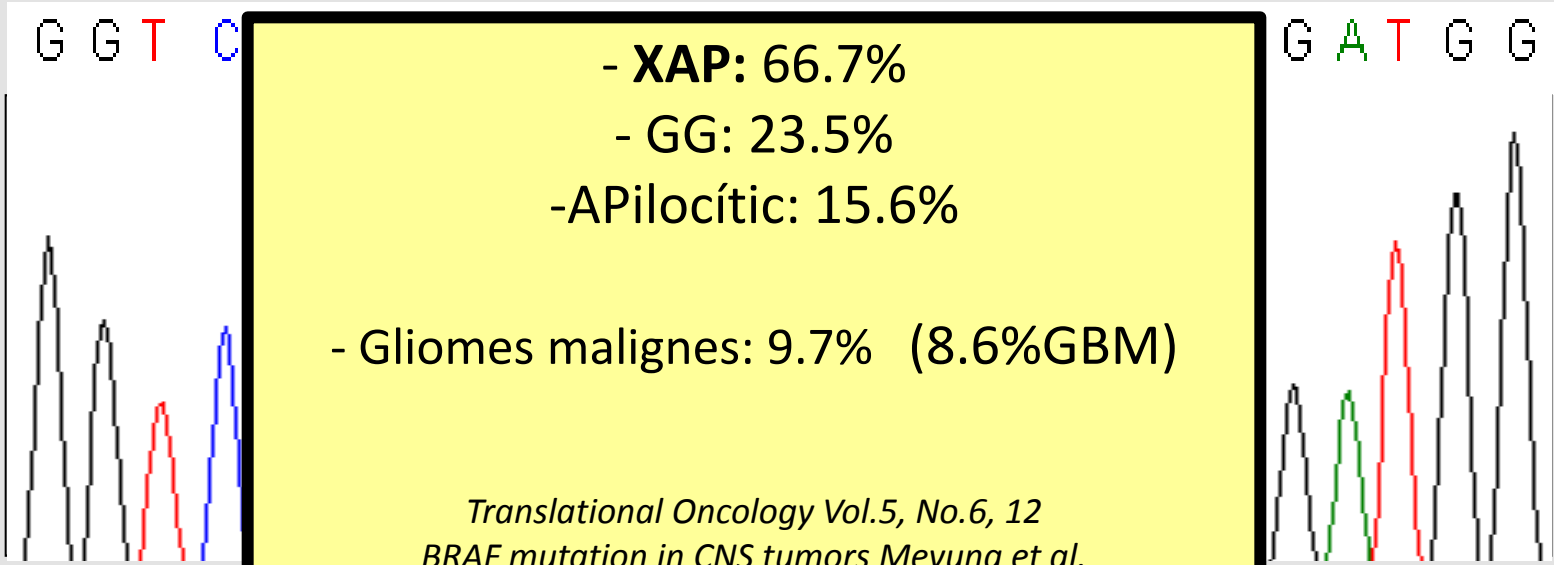


Determinació de mutacions del gen *BRAF*:

-*BRAF* codó **V600E**: Mutat

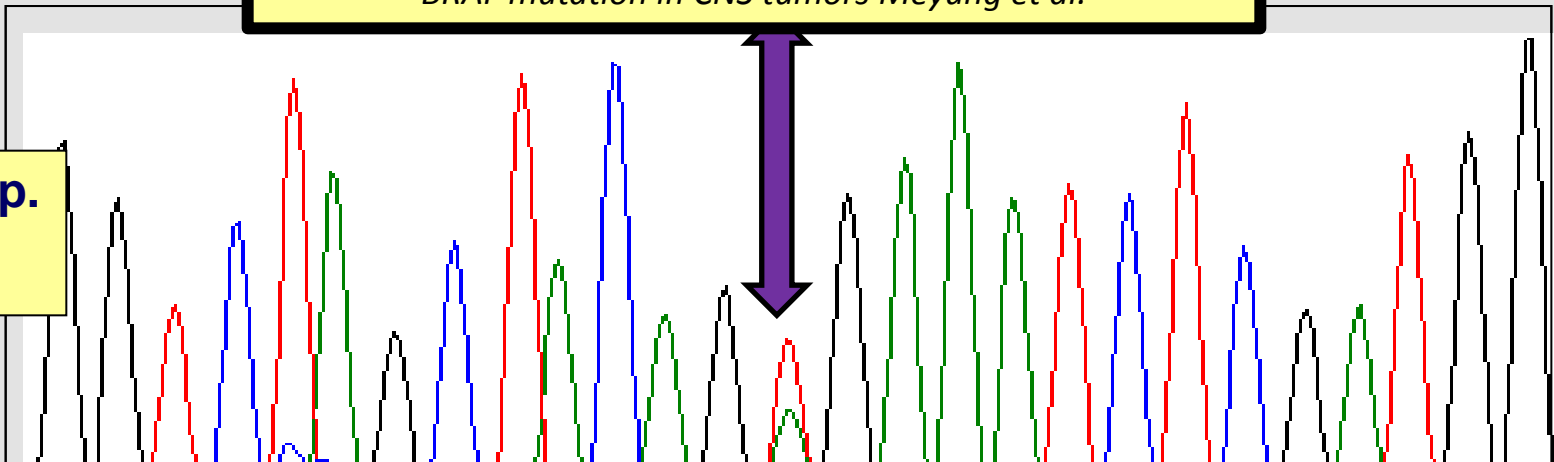
-Mètode: PCR / Seqüenciació Sanger

WT



c.1799T>A:p.

V600E



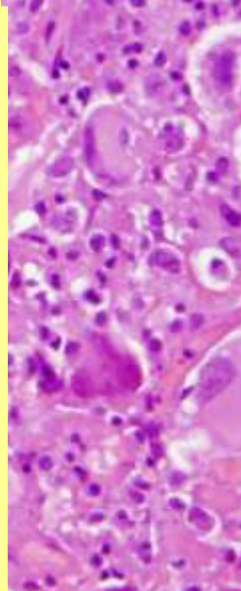
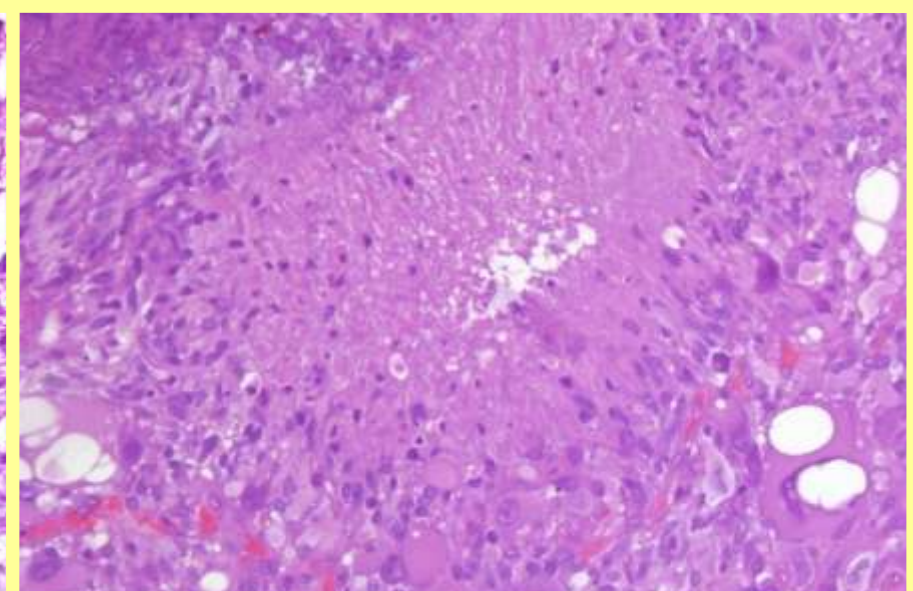
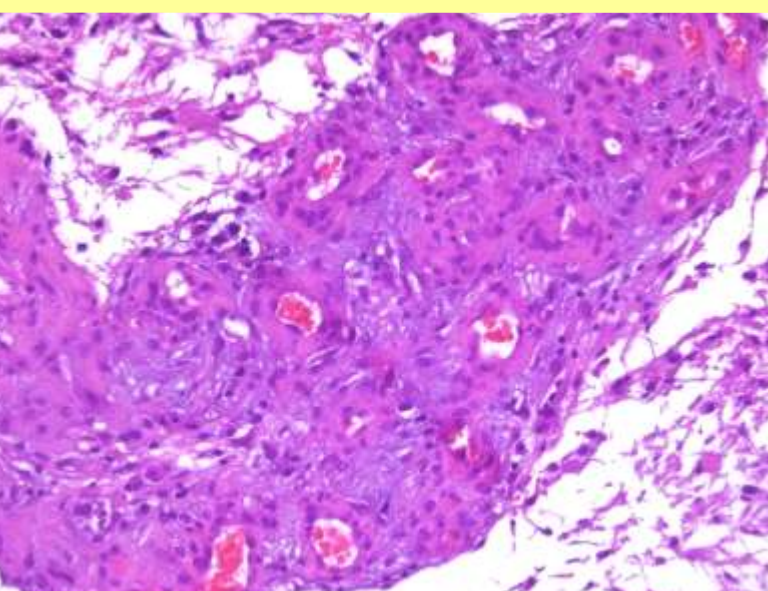
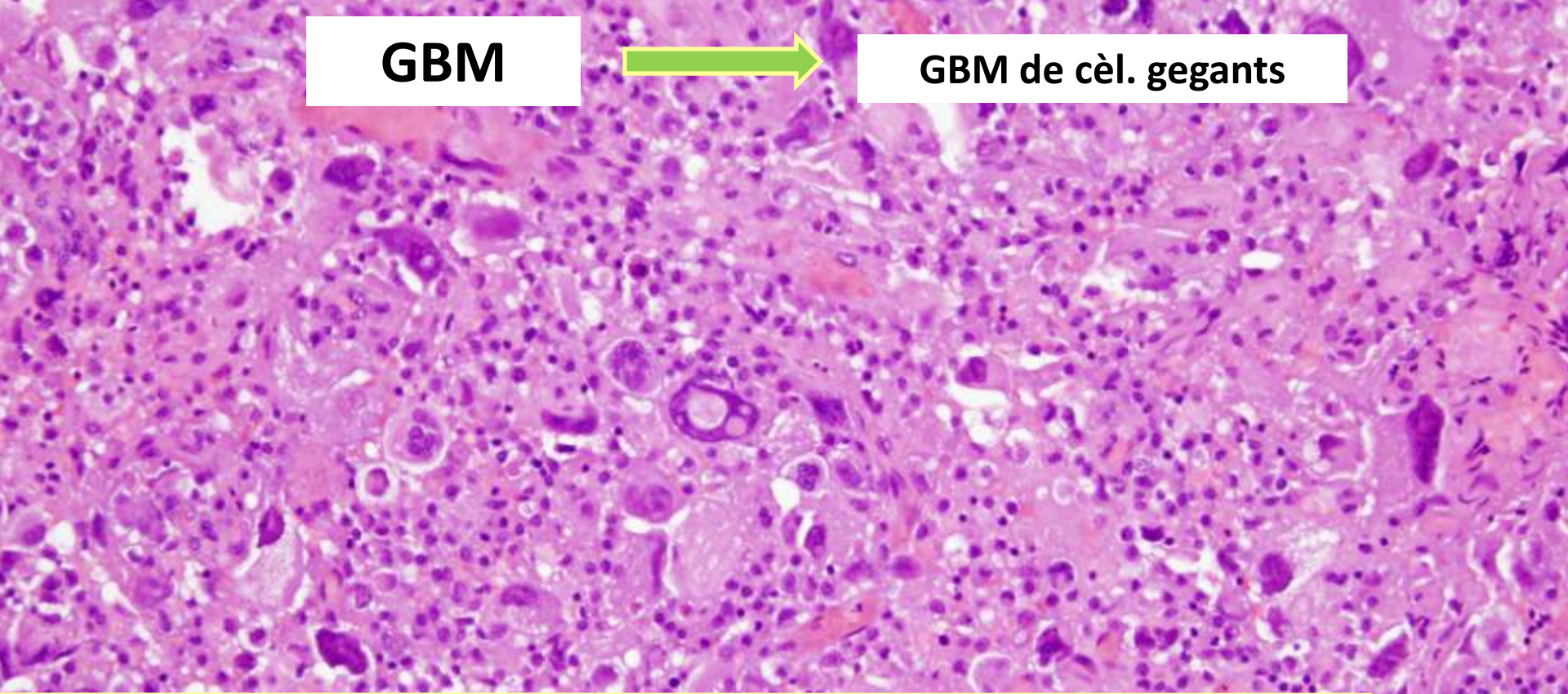
DIAGNÒSTIC :

- Xantoastrocitoma pleomorf

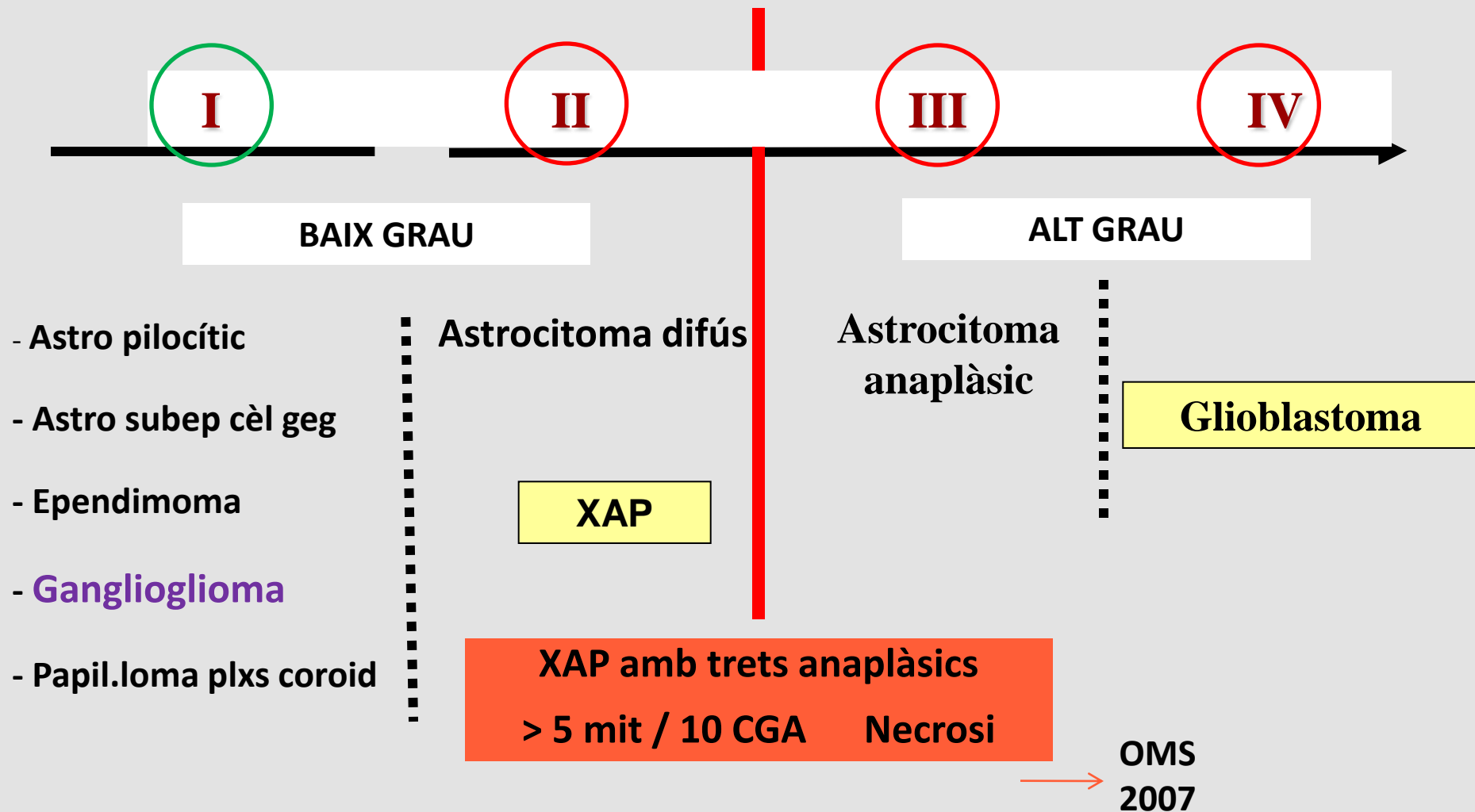
GBM



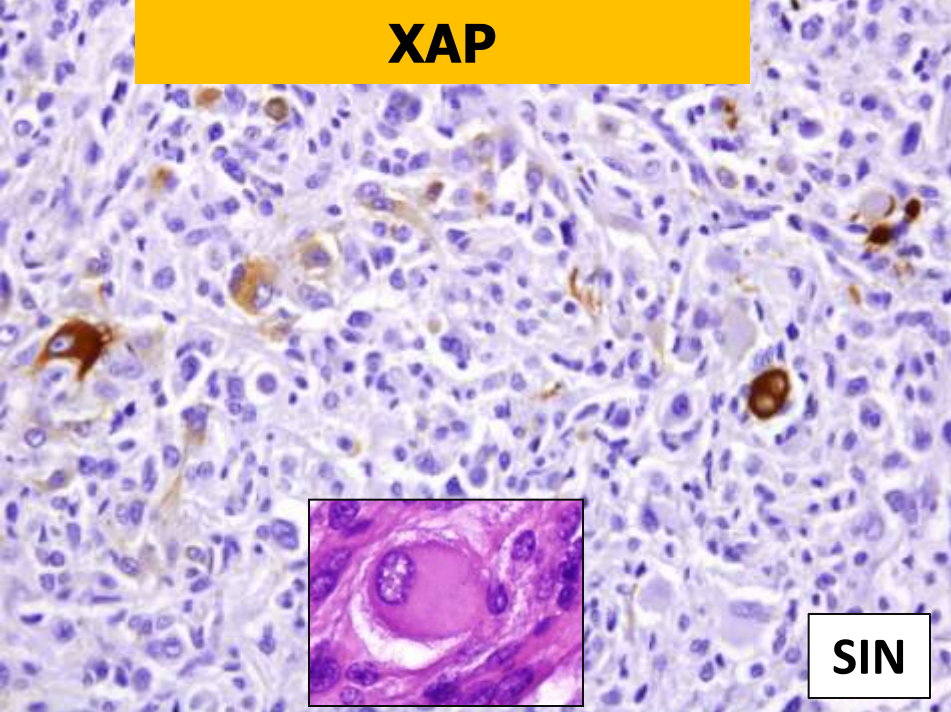
GBM de cèl. gegants



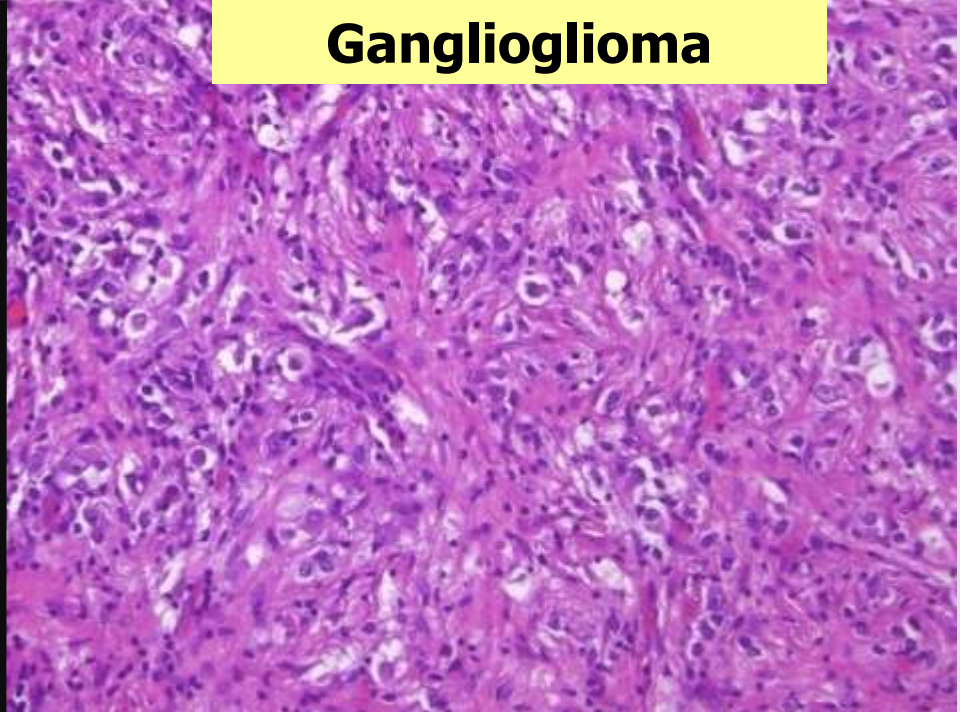
XAP: Comportament biològic



XAP



Ganglioglioma



SIN

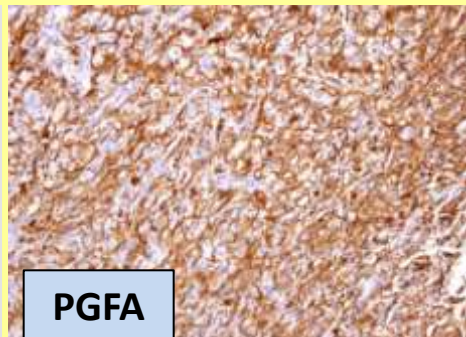
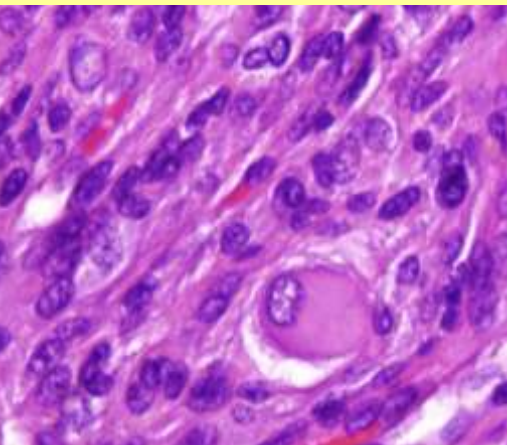
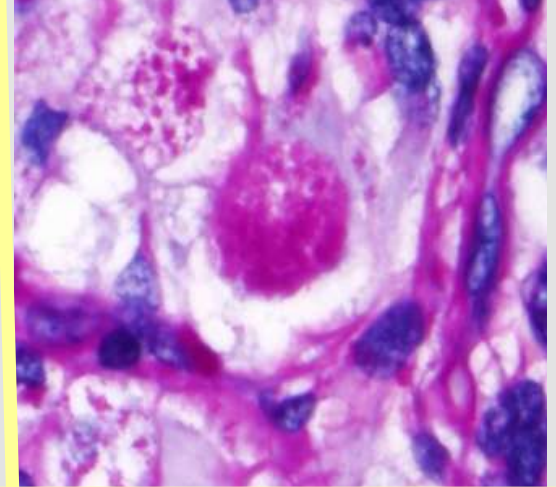
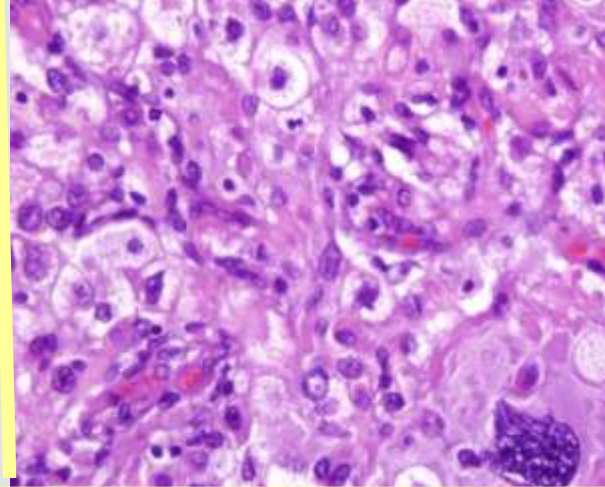
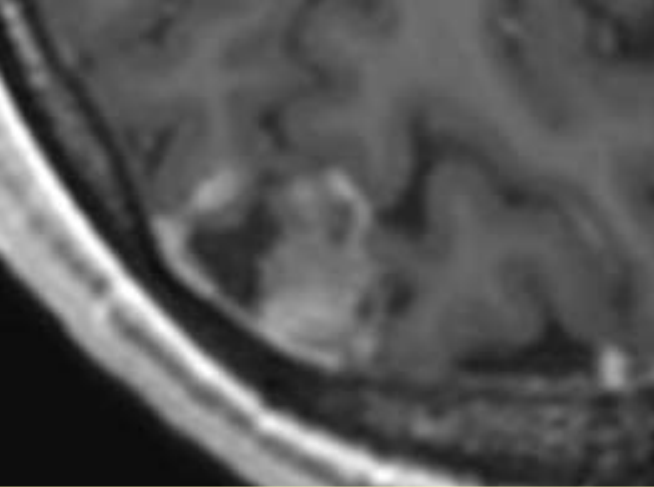
XAP
SIN -
NF -

XAP
SIN+
NF+

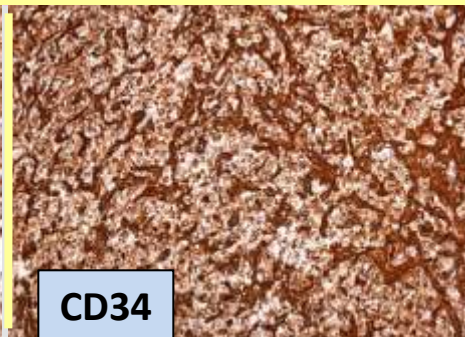
XAP
Neurones
SIN+
NF+

GG amb component
glial de XAP

GG amb component
glial de astrocitoma II
o A. pilocític



PGFA



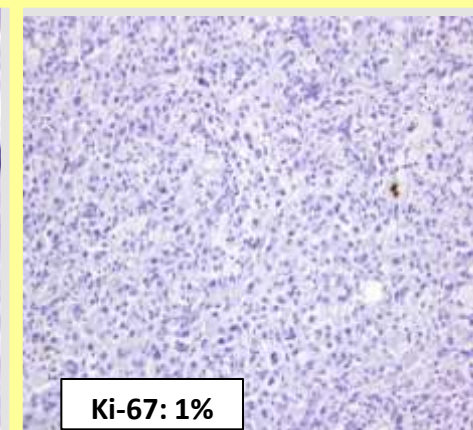
CD34



Reti



Sinapto



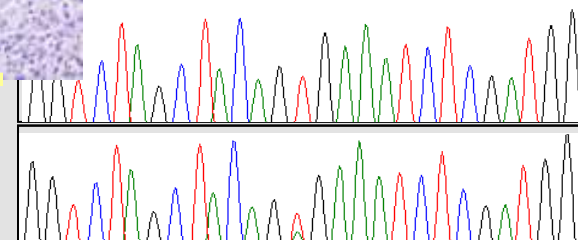
Ki-67: 1%

No necrosi
No HmV

<5mitosis/10
CGA

BRAF

CTAGCTACAGTGAAATCTCGATGG



EVOLUCIÓ

-Als 5 dies **TC**: Canvis post-quirúrgics

-**Pendent** de control evolutiu amb RMN o TC

-**Exploració**: Sense signes d'alteracions cognitives significatives